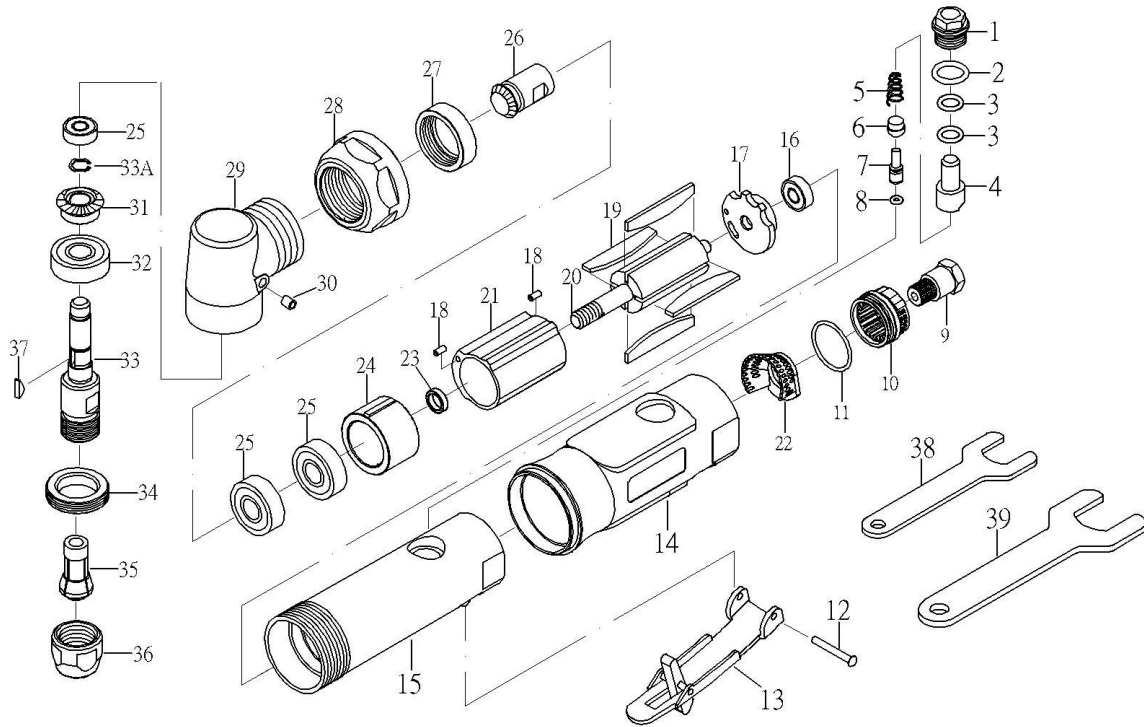


# ZP319 Air Angle Die Grinder



## ZP319 Air Angle Die Grinder

### TECHNICAL

### DATA

Collet Size	inch(mm)	1/4(6)
Net Weight	lbs(kgs)	1.5(0.7)
Length.	in (mm)	7(178)
RPM	RPM	18000
Air Inlet Size	inch-NPT/PT	1/4
Min. Hose Size	inch(mm)	3/8(10)
Avg. Air Consumption	cfm	3.7

## PARTS LIST

Index	Part #	Description	Index	Part #	Description
1	ZP319-1	SCREW	21	ZP319-21	CYLINDER
2	ZP319-2	O-RING(P12)	22	ZP319-22	CONE MUFFLER
3	ZP319-3	O-RING(P8)(2)	23	ZP319-23	BEARING SPACER
4	ZP319-4	AIR REGULATOR	24	ZP319-24	FRONT PLATE
5	ZP319-5	SPRING	25	ZP319-25	BEARING(608ZZ)(3)
6	ZP319-6	VALVE STEM BUSHING	26	ZP319-26	BEVEL GEAR(18T)
7	ZP319-7	VALVE STEM	27	ZP319-27	NUT
8	ZP319-8	O-RING(3.5*1.4)	28	ZP319-28	CLAMP NUT
9	ZP319-9	AIR INLET	29	ZP319-29	ANGLE HOUSING
10	ZP319-10	EXHAUST SLEEVE	30	ZP319-30	OIL CUP
11	ZP319-11	O-RING(26.7*1.78)	31	ZP319-31	BEVEL GEAR(20T)
12	ZP319-12	SPRING PIN	32	ZP319-32	BEARING(6000ZZ)
13	ZP319-13	LEVER	33	ZP319-33	SHAFT
14	ZP319-14	PROTECTING RUBBER	33A	ZP319-33A	SNAP RING
15	ZP319-15	HOUSING	34	ZP319-34	CLAMP NUT
16	ZP319-16	BEARING(696ZZ)	35	ZP319-35	COLLET
17	ZP319-17	REAR PLATE	36	ZP319-36	COLLET NUT
18	ZP319-18	PIN(2)	37	ZP319-37	KEY
19	ZP319-19	ROTOR BLADE(4)	38	ZP319-38	STOP SPANNER 14M/M
20	ZP319-20	ROTOR	39	ZP319-39	STOP SPANNER 19M/M