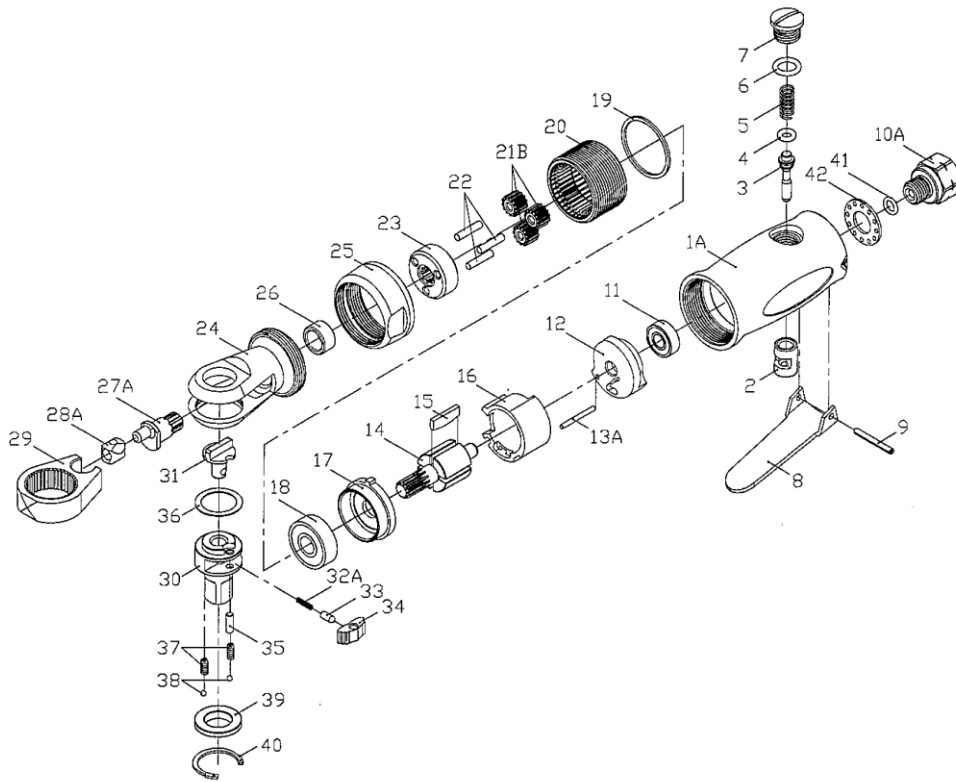


ZP169 3/8" Air Ratchet Wrench



ZP169 3/8" Air Ratchet Wrench

TECHNICAL DATA

Square Drive : 3/8(10)inch(mm)
 Std. Bolt Size : 1/4(6.4)inch(mm)
 Free Speed : 260R.P.M.
 Max. Torque : 20(27)ft-lb(NM)
 Avg. Air Cons. : 2.5(70)cfm(l/min)

Air Inlet Size : 1/4inch
 Net Weight : 0.99(0.45)lbs(kgs)
 Overall Length : 5-1/4(133)inch(mm)
 Min. Hose Size : 1/4(6.4)inch(mm)
 Operating Air Pressure : 90(6.2)PSI(kg/cm2)

PARTS LIST

Index	Part #	Description	Q'ty	Index	Part #	Description	Q'ty
1A	ZP169-01A	Motor Housing	1	22	ZP169-22	Pin	3
2	ZP169-02	Throttle Valve	1	23	ZP169-23	Gear Plate	1
3	ZP169-03	Valve Stem	1	24	ZP169-24	Ratchet Housing	1
4	ZP169-04	O-ring	1	25	ZP169-25	Clamp Nut	1
5	ZP169-05	Spring	1	26	ZP169-26	Bushing	1
6	ZP169-06	O-ring	1	27A	ZP169-27A	Crank Shaft	1
7	ZP169-07	Valve Plug	1	28A	ZP169-28A	Drive Bushing	1
8	ZP169-08	Throttle Lever	1	29	ZP169-29	Ratchet Yoke	1
9	ZP169-09	Spring Pin	1	30	ZP169-30	Ratchet Anvil	1
10A	ZP169-10A	Air Inlet	1	31	ZP169-31	Reverse Button	1
11	ZP169-11	Ball Bearing	1	32A	ZP169-32A	Spring	1
12	ZP169-12	Rear End Plate	1	33	ZP169-33	Lock Pin	1
13A	ZP169-13A	Pin	1	34	ZP169-34	Ratchet Pawl	1
14	ZP169-14	Rotor	1	35	ZP169-35	Pin	1
15	ZP169-15	Rotor Blade	4	36	ZP169-36	Washer	1
16	ZP169-16	Cylinder	1	37	ZP169-37	Spring	2
17	ZP169-17	Front End Plate	1	38	ZP169-38	Steel Ball	2
18	ZP169-18	Ball Bearing	1	39	ZP169-39	Thrust Washer	1
19	ZP169-19	Washer	1	40	ZP169-40	Retainer Ring	1
20	ZP169-20	Internal Gear	1	41	ZP169-41	O-ring	1
21B	ZP169-21B	Planet Gear	3	42	ZP169-42	Exhaust Diffuser	1