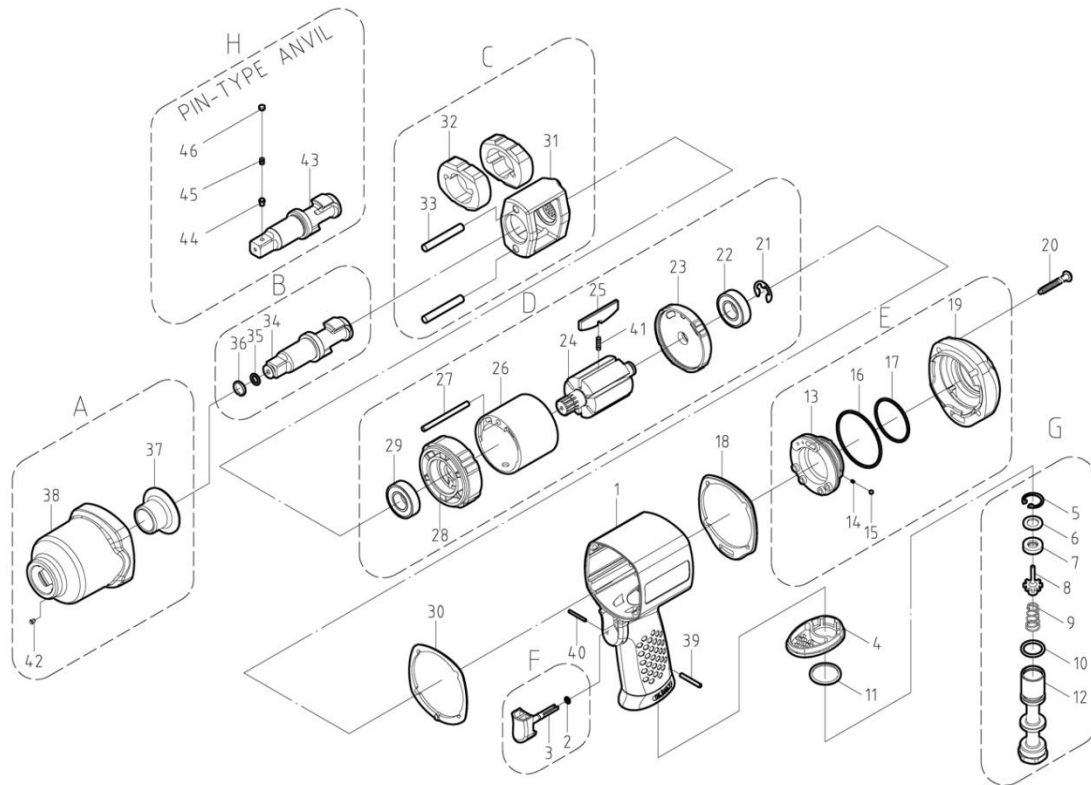


ZIW1015C 1/2" Composite Air Impact Wrench



ZIW1015C 1/2" Composite Air Impact Wrench

TECHNICAL DATA

Square Drive	inch(mm)	1/2"(12.7)
Free Speed	R.P.M.	8500
Max. Torque(15 secs)	ft-lb(NM)	820(1100)
Working torque(5 secs)	ft-lb(NM)	650(880)
Avg. Air Cons.	cfm(l/min)	4.9(139)
Net Weight	lbs(kgs)	4.6(2.1)
Impact mechanism		Twin Hammer

PARTS LIST

Index	Part #	Description	Index	Part #	Description
1	ZIW1015C-01	Housing	24	ZIW1015C-24	Rotor
2	ZIW1015C-02	O-Ring	25	ZIW1015C-25	Blade (7)
3	ZIW1015C-03	Trigger	26	ZIW1015C-26	Cylinder
4	ZIW1015C-04	Exhaust Deflector	27	ZIW1015C-27	Spring Pin
5	ZIW1015C-05	Retaining Ring	28	ZIW1015C-28	Front Plate
6	ZIW1015C-06	Washer	29	ZIW1015C-29	Ball Bearing
7	ZIW1015C-07	Oil Seal	30	ZIW1015C-30	Packing
8	ZIW1015C-08	Pin Valve Rod	31	ZIW1015C-31	Hammer Cage
9	ZIW1015C-09	Cone Spring	32	ZIW1015C-32	Hammer (2)
10	ZIW1015C-10	O-Ring	33	ZIW1015C-33	Hammer Pin (2)
11	ZIW1015C-11	Washer	34	ZIW1015C-34	Anvil
12	ZIW1015C-12	Air Inlet	35	ZIW1015C-35	O-Ring
13	ZIW1015C-13	Reverse Lever	36	ZIW1015C-36	Anvil Collar
14	ZIW1015C-14	Spring	37	ZIW1015C-37	Bushing
15	ZIW1015C-15	Steel Ball	38	ZIW1015C-38	Front Casing
16	ZIW1015C-16	O-Ring	39	ZIW1015C-39	Spring Pin
17	ZIW1015C-17	O-Ring	40	ZIW1015C-40	Spring Pin
18	ZIW1015C-18	Packing	41	ZIW1015C-41	Spring (7)
19	ZIW1015C-19	Cover	42	ZIW1015C-42	Oil Drop
20	ZIW1015C-20	Screw (4)	43	ZIW1015C-43	Anvil
21	ZIW1015C-21	E-Ring	44	ZIW1015C-44	Lock Pin
22	ZIW1015C-22	Ball Bearing	45	ZIW1015C-45	Spring
23	ZIW1015C-23	Rear Plate	46	ZIW1015C-46	Pin